



**Frank E. Bolden Scholarship Fund  
Advisory Committee**

- |                            |                        |
|----------------------------|------------------------|
| Nancy Travis Bolden, Chair | Chris Moore            |
| Clarence Curry             | Charles Quillen, Ph.D. |
| Ilene Kurfeerst, Ph.D.     | Sylvia Robinson        |
| Kenneth Love               | Myrna Sumpter          |
| Barbara Love McNulty MD    | Gelora Wilson          |

**Frank E. Bolden Scholarship Fund**



Nancy Travis Bolden  
Chair Scholarship Committee

The Frank E. Bolden Scholarship fund has now awarded 16 scholarships. Two students enrolled at the University of Pittsburgh are the most recent recipients. Jessica Muradov is pursuing Certification in Special Education. Chelsea Aston is pursuing certification in both Early Childhood Education and Special Education. This is the first time the scholarship has been awarded to a student from the University of Pittsburgh.

In our last newsletter we recognized that many people may have limited information about what people with these certifications do and whom they serve. We indicated in subsequent newsletter that we would explore their work. For this newsletter Dr. Eileen Estomen, who prior to her retirement was Director of Special Education for the Pittsburgh Public Schools, has prepared an introduction to Special Education Programs and Services. In future Newsletters, we will explore specific programs and services in greater detail.

This year we have again increased the amount of the Scholarship and will continue to annually. We are extremely grateful to those of you who make this increase possible through your contributions.

**Special Education Programs and Services: What are They?**

A teacher, psychologist, special education services provider or administrator recommends that your child needs special education. Do you think something is wrong with your child?

Here's another approach to understanding this recommendation. Your child may need specially designed instruction and/or related services. All public schools want your child to be successful in school and prepared to participate in society after graduation. All public schools are required to offer free and appropriate public education and all public schools are required to adapt education to meet the individual needs of your child. Your child may need to have the content adapted (what is taught), the methodology adapted (the process used to teach), and how education is delivered.

To determine the appropriate education for your child, the following questions will be answered :

- ◆ Does your child have a disability and require special education?

- ◆ What programs and services does your child need?
- ◆ Who will provide the services?
- ◆ Where will the service be delivered?

Special Education refers to a wide range of abilities and is defined by the following :

- ◆ Intellectual Disabilities
- ◆ Emotional Disabilities
- ◆ Orthopedic Impairment
- ◆ Hearing Impairment/deafness
- ◆ Speech/Language Impairment
- ◆ Visual impairments including blindness
- ◆ Autism
- ◆ Specific Learning Disability
- ◆ Deaf-Blindness
- ◆ Multiple Disabilities

The definition of the disability does not determine which programs and services are required. The needs of the child drive the educational program and is delineated in what is called an IEP.

This plan is written with input from parent or guardian and school personnel. For the child to achieve optimal educational performance, there needs to be support from school personnel and families!

NONPROFIT ORG  
US POSTAGE  
PAID  
PITTSBURGH, PA  
PERMIT NO 177



**Publisher's Note**



As we engage in the 20<sup>th</sup> year of the Frank E. Bolden Scholarship Fund, I am extremely proud that POISE has worked to help this fund not only grow to over \$60,000 but more importantly, worked with the Scholarship committee to help so many deserving students complete their degrees in early childhood learning or special education by providing over \$23,000 to date. The students supported by this fund work with and help nurture some of our most vulnerable young people. We are pleased that we are able to help these students achieve their dreams and launch their careers.

help. This milestone will ensure that we are able to continue to provide the significant support needed to ensure we help these caring students become caring teachers. As the cost of tuition continues to rise, students need more support today than ever. You can help continue Frank Bolden's legacy and passion for our youth by donating to this fund and the amazing young people it has and will continue to support.

Please share this newsletter with others or share names with whom we can send it to.

**Mark Lewis**  
President & CEO  
POISE Foundation

In honor of reaching 20 years, help us to reach a fund goal of \$75,000 by the end of 2018. With less than \$15,000 to go, it is very achievable. But we need your



**Words From a Friend: By Chris Moore**

Frank Bolden was my hero and the reasons are many. First of all he had an acerbic nature and didn't tolerate fools but for some reason he tolerated me. At first it was his career and writing ability that impressed me. Often I would sit at his feet and marvel at his ability to turn a phrase. For instance, once he showed me some headlines he had written as a war correspondent and many of them began with the phrase, "Ten Yanks." Frank was one of only two correspondents who were Black who became certified by the war department to cover the China Burma India (CBI) theater in World War II. The CBI was where many black troops served as engineers, and transport drivers that both built and drove on the dangerous by critical supply line known as the Burma Road. I asked him how he came up with the phrase "Ten Yanks" and he told me he just got tired of saying Negro troops. His writing was always colorful.

A student of history, Frank could be very gruff with people he thought were unlearned. But if you had a genuine thirst for knowledge he could be the greatest teacher a student could have. You had to want to be around him and to be a willing student. For all his exterior gruffness, he taught me patience as well and that it was sometimes my job as a journalist to be patient and take the time to educate people. He taught me to be well read and to always speak the truth. He said, "The truth just stands there like the Rock of Gibraltar."

I think Frank's greatest gift to all of us is as an educator. This scholarship is about education and his undying interest in it. Even in death Frank is inspiring people to pursue educating others. Not as a doctor, not as a journalist, but as an early educator. I believe that is so that he won't have to do remedial teaching that he did with me. In the end, that's who I think Frank really was, the greatest educator for which a man could ask.

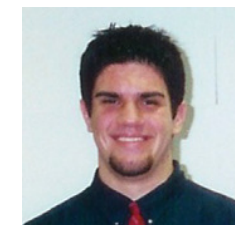
**2016-2017 Contributors to the Frank E. Bolden Scholarship Fund**

- |                         |                             |                        |                        |
|-------------------------|-----------------------------|------------------------|------------------------|
| Samuel K. Anderson      | Della Ellis Hale            | Evelyn L. Murrin       | Myrna Sumpter          |
| Constance P. Bethel     | Charles and Beatrice Harris | Raymond & Dorothy Owen | Jerome Taylor          |
| Nancy Travis Bolden     | Francene E. Haymon          | Dr. Mary H. Page       | Shirley R. Tyree       |
| Doris G. Brevard        | Lawrence & Elizabeth Howard | Dr. Rachel Poole       | Beatrice Wright Vasser |
| Thomas J. Craft Sr. PhD | Patricia P. Jennings        | Charles Robert Quillin | Margie Byrd Walker     |
| Normandie Fulson        | Dr. Ilene L.S. Kurfeerst    | Lorrie E. Rabin        | Gelora Wilson          |
| Laurence A. Glasco      | Kenneth and Barbara Love    | Lynne A. Robinson      |                        |

**OUR PAST RECIPIENTS**



Njeri Branch—2001



Eric Jankowski—2002



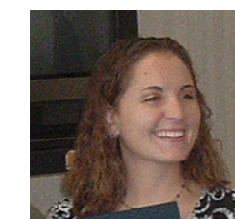
Lidsay Mielecki — 2003



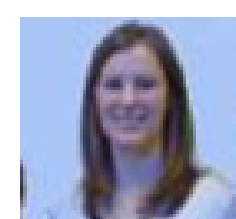
Andrea Coleman Betts 2005



Kecia Scott —2005



Adriane LaRussa—2006



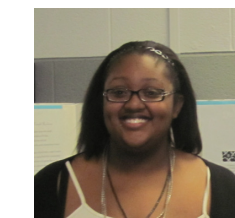
Eizabeth Suwala -2007



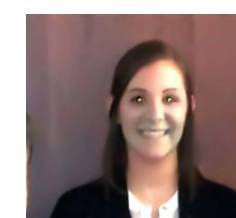
Suzannah Cannon —2009



Lauren Skrastins -2011



Anay Pope—2011



Naomi Canon -2012



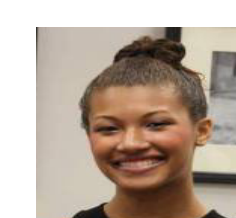
Brittany Ofcharka—2014



Ciarra Lewis — 2014



Dana Denson —2015



Chelse Aston -2017



Jessica Muradov — 2017